



Clewer Crescent, Harrow Weald

£525,000 Freehold

Rawlinson Gold are delighted to present this extended three-bedroom, semi-detached family home, offering both comfort and convenience.

Ideally located near Headstone Lane London Overground station, this property benefits from excellent transport links and is within close proximity to Cedars First and Middle Schools, Hatch End High School and Whitefriars' co-educational all-through school and sixth-form, making it an ideal choice for families. Nearby shopping amenities include Waitrose and Lidl on High Road, Harrow Weald, as well as additional retail and dining options.

The accommodation comprises an entrance porch, hallway with storage cupboard, a through-lounge and an extended kitchen with a utility and breakfast area, whilst the first floor features a landing, three bedrooms and a contemporary family shower room.

Externally, the property benefits from off-street parking for two cars at the front, whilst to the rear, there is a well-maintained garden, mainly laid to lawn. Additionally, a garage - accessible via the garden and Derby Avenue - provides further storage or parking options.

EPC Rating: D
Council Tax Band: D

- Semi Detached Family Home • Three Bedrooms • Through Lounge • Extended Kitchen with Breakfast Area • Utility Area • Gas Central Heating System • Double Glazed Windows • Well-Maintained Garden • Off Street Parking • Garage to Rear



Clewer Crescent, Harrow Weald

£525,000 Freehold

FURTHER DETAILS

The accommodation comprises an entrance porch, hallway with storage cupboard, a through-lounge and an extended kitchen with a utility and breakfast area, whilst the first floor features a landing, three bedrooms and a contemporary family shower room. Externally, the property benefits from off-street parking for two cars at the front, whilst to the rear, there is a well-maintained garden, mainly laid to lawn. Additionally, a garage - accessible via the garden and Derby Avenue - provides further storage or parking options.

LOCATION

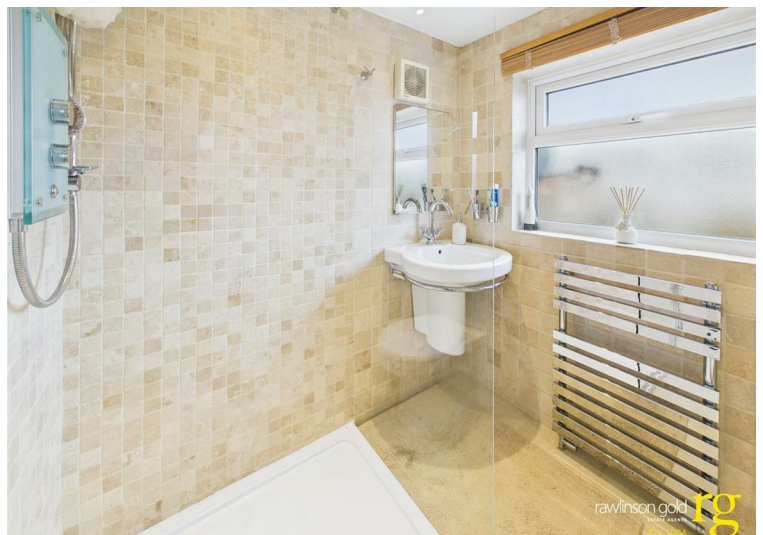
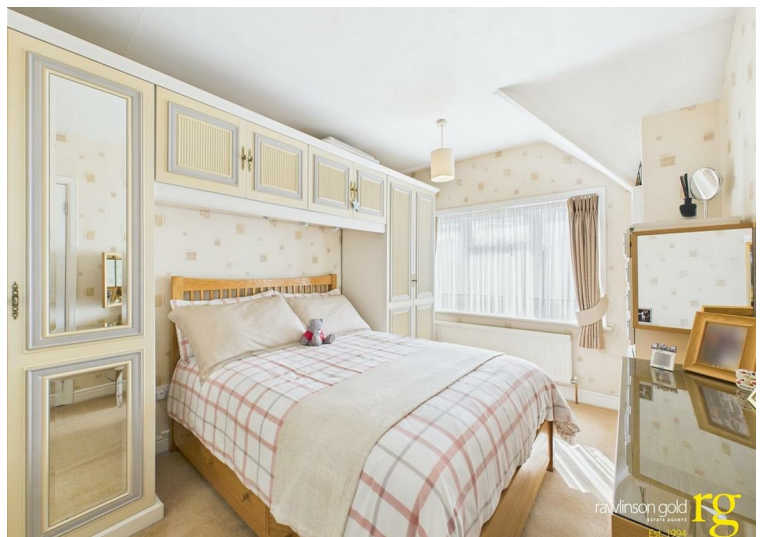
Clewer Crescent is located off Windsor Road in Harrow Weald. This is a short distance from Headstone Lane Station offering London Overground connection and Harrow & Wealdstone Station offering Bakerloo Line and London Overground connections. Further transport and shopping facilities such as Waitrose and Lidl can be found on High Road, Harrow Weald.

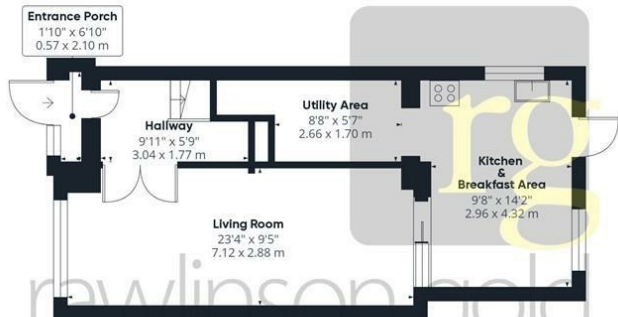
FREE MARKET APPRAISAL

Please contact our Harrow Office if we can be of assistance with the sale or rental of your current property.

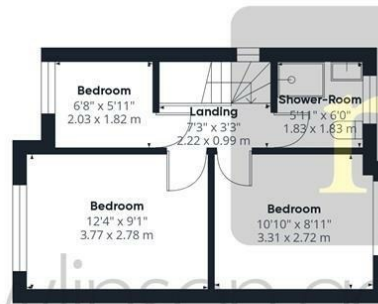
CONTACT RAWLINSON GOLD

If you would like to arrange a viewing or discuss any aspect of this property, please contact our Harrow Office by telephone on 020 8861 2020 or by email at harrow@rawlinsongold.co.uk.

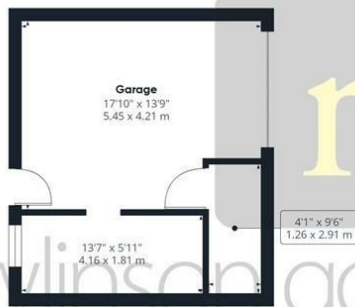




Ground Floor Building 1



Floor 1 Building 1



Ground Floor Building 2

Approximate total area⁽¹⁾
1153.35 ft²
107.15 m²

(1) Excluding balconies and terraces

While every attempt has been made to ensure accuracy, all measurements are approximate, not to scale. This floor plan is for illustrative purposes only.

Calculations were based on RICS IPMS 3C standard. Please note that calculations were adjusted by a third party and therefore may not comply with RICS IPMS 3C.

GIRAFFE360